



ROB LETTS

exp UK

Aldbrough Way, York

£315,000

3 1 2



RL0918 - This charming three-bedroom end townhouse, situated just off Leeman Road, offers a wonderful opportunity for its new owner to personalise and create their ideal home. The well-maintained property features an entrance hallway, a convenient ground-floor W.C., a spacious lounge and dining area with an open flow into the kitchen, and a conservatory that opens onto the rear garden.

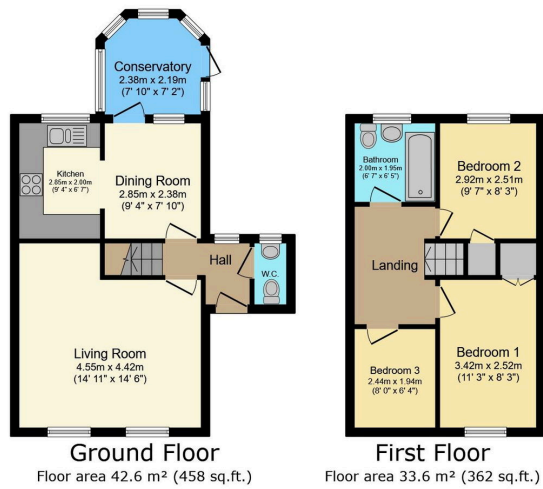
On the first floor, you'll find three bedrooms and a family bathroom.

Outside, the low-maintenance garden includes a lawned area with planted borders, a decked section, and is enclosed by fence and wall boundaries. Just beyond the garden, a private driveway offers off-street parking and access to the garage.

With ample green space nearby and within walking distance to the city centre, this property could be your perfect match.

Council Tax Band B

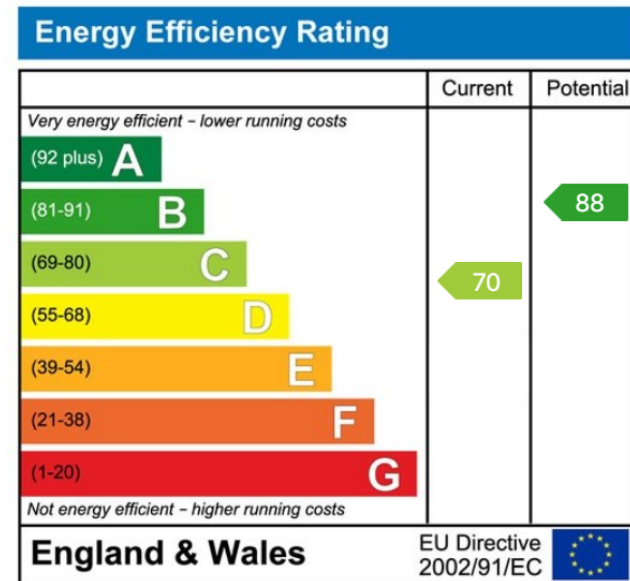




TOTAL: 76.2 m² (820 sq.ft.)

This floor plan is for illustrative purposes only. It is not drawn to scale. Any measurements, floor areas (including any total floor area), openings and orientations are approximate. No details are guaranteed, they cannot be relied upon for any purpose and do not form any part of any agreement. No liability is taken for any error, omission or misstatement. A party must rely upon its own inspection(s). Powered by www.Propertybox.co

- Quote RL0918 to enquire or book a viewing on this property
- Three Bedrooms
- Dining Room With Open Access To The Kitchen
- Great Location
- No Forward Chain
- End Townhouse
- Large Lounge
- Conservatory
- Garage & Off Street Parking
- EPC Rating "C" & Council Tax Band "B"



ROB LETTS



07538 298 866



robletts.exp.uk.com



rob.letts@exp.uk.com